



1-800-337-1537 US ONLY

Lord Of The Manor

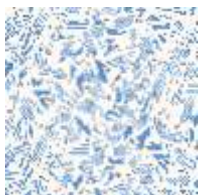
Free Pattern

Approximately 36" x 50"

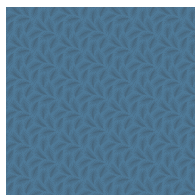
Please read ALL instructions BEFORE beginning your quilt



Colors Used



A-7601-B
Total Yardage
Required for
Project:
1-1/2 yards

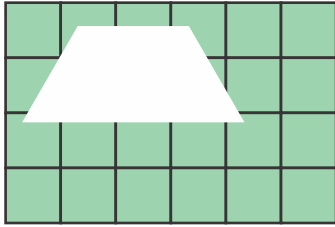


A-7332-B1
Total Yardage
Required for
Project:
2/3 yards

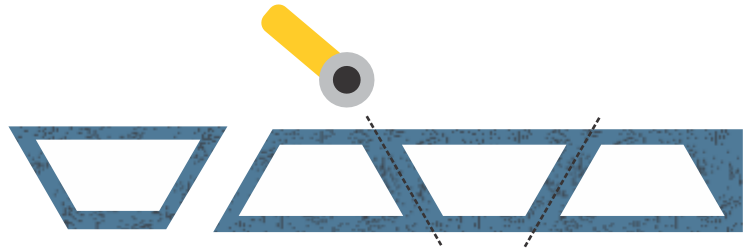


A-7665-B
Total Yardage
Required for
Project:
4-1/2 yards

Cutting For Half Hexagons



1) Place your half hexagon on the cutting mat to see what size strip you need to cut. In this case, a 2" half hexagon will take a 2-1/2" strip.



2) Place your half hexagons on the cut strip and allow 1/4" to 1/2" from the top and bottom of the piece.

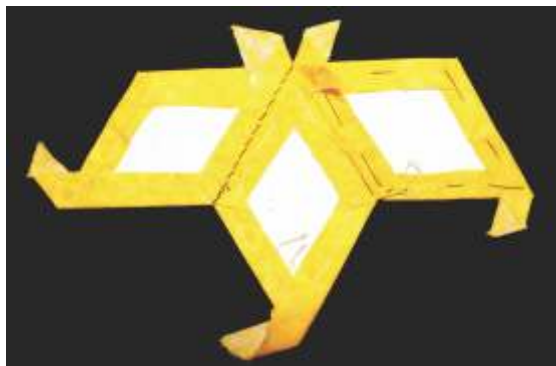
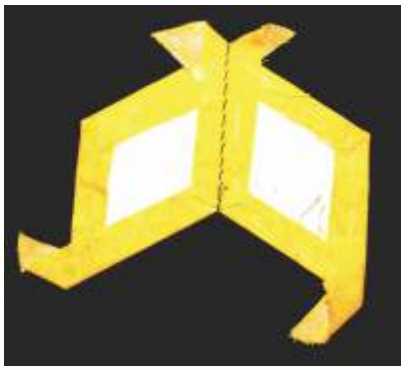
3) After cutting the strips, use the 60 degree angle for the half hexagons on your ruler and sub cut the strips into half hexagon shapes.

Whip Stitching Straight Edges

After you have a number of pieces basted you can start whipping them together. With a matching thread, bury the knot between the paper piece and the seam allowance. If sewing a dark and light colored piece together, match the thread to the darker color.



Take two anchoring stitches when starting and whip stitch until you reach the next corner. Do not sew through the paper when joining the pieces. Your needle should slide next to the paper between the edge of the paper piece and the fabric, just catching the edge of the fabric.



We recommend about 6-10 stitches per inch. When you reach the "corner", secure it by taking two stitches together. If your whip stitches are showing on the right side of the fabric, tighten the stitch slightly and catch less fabric. The stitching should be taut and even, but not pulling. Continue whipping pieces together to finish the block.

Removing the Papers

You can remove the papers once a piece is surrounded on all sides. Carefully pull the basting threads and remove the papers from the back side. These papers can be used again.

For the outer edges, press carefully while the papers are still in. This will help the fabric keep the shape of the paper piece. Once all of the edges are pressed, gently pull out the basting stitches and remove the papers from the back side keeping the shape with the seam allowance folded under. It is a good idea to run a basting stitch along the edge to keep the seam allowance folded under.

Adding Borders

Squaring It Off

To add a straight border you must first trim the edges of your quilt top. Remove all the pieces and press the outside seam allowances flat. Take your rotary cutter and ruler and trim all the edges to get a straight line a 1/4" away from the edge.



1) Line up your ruler 1/4" from the edge of the top.



2) Trim the excess.



3) Remove cut pieces and continue for all sides of the quilt top.

Adding Borders

Cutting The Borders

Once your quilt top is squared off, measure the long side of your quilt. Add 4" to this number to get the total for your long borders. Cut two borders this size. Match the middles of the borders with the middle of the quilt top and pin borders in place. Sew them to your quilt top (Fig. 1). Repeat the process for the short borders. (Fig. 2). Once both sets of borders are attached, square off the corners and trim away any excess bulk from behind. (Fig. 3).

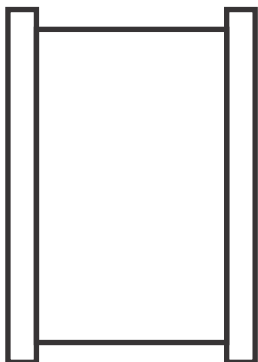


Fig. 1

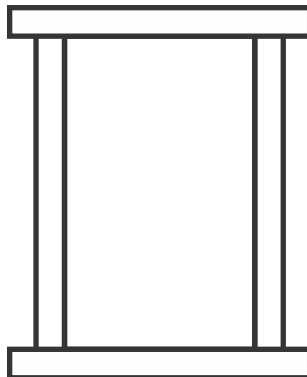


Fig. 2

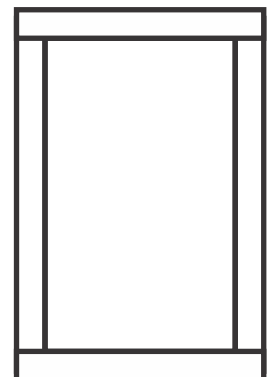


Fig. 3

Wall Hanging/ Lap Quilt

Quilt Size 36" x 50"

Paper Pieces Required

194 - 2" Half Hexagons (HHX200)

Fabric Required

Pieces

Half Hexagons:

Light Blue (A-7665-W): 2/3 yard

Medium Blue (A-7332-B1): 2/3 yard

Dark Blue (A-7665-B): 2/3 yard

Inner Border	3/8 yard
Outer Border	3/4 yard
Backing	40" x 54"
Batting	40" x 54"
Binding	1/2 yard

Cutting Instructions

Pieces

****Note:** A strip is considered the width of the fabric from selvage to selvage.

Half Hexagons:

Light Blue (A-7665-W): Cut nine 2-1/2" Strips.

Sub cut into 64 Half Hexagons.

Medium Blue (A-7332-B1): Cut nine 2-1/2" Strips.

Sub cut into 65 Half Hexagons.

Dark Blue (A-7665-B): Cut nine 2-1/2" Strips.

Sub cut into 65 Half Hexagons.

Inner Border Cut (4) 2-1/2" strips.

Outer Border Cut (5) 4-1/2" strips.

Binding Cut (5) 2-1/2" strips.

Assembly Instructions

1) Baste the fabric to the Paper Pieces according to the basic instructions.

Hint for Half Hexagons: When basting the half hexagons, do not finish the points. Fold the seam allowance along one side and baste to the point. At the point, fold the opposite seam allowance over and baste it down. Leave the excess seam allowance at the end point sticking out. When sewing the half hexagons together, hold these small "tails" out of the way and stitch according to the instructions.



Make 64



Make 65



Make 65

Assembly Instructions Continued

2) Sew the half hexagons into the following sets:

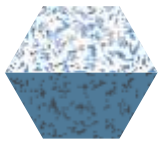


Fig. 1

**Light Blue and Medium Blue
Make 32**

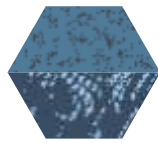


Fig. 2

**Medium Blue and Dark Blue
Make 33**

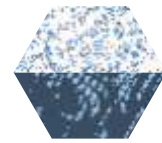


Fig. 3

**Light Blue and Dark Blue
Make 32**

3) Sew figure 1 and figure 3 together by the light blue making sure the set with the medium blue is always on the left and the set with the dark blue is always on the right.

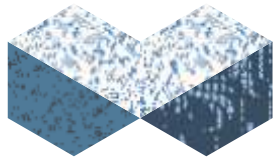
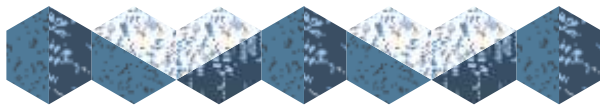


Fig. 4

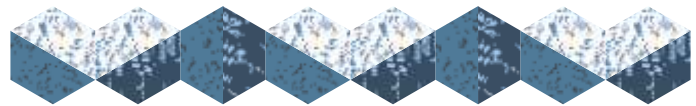
**Light Blue/Medium Blue
sewn to
Light Blue/Dark Blue
Make 32**

4) Sew figure 4 and figure 2 together into the following rows making sure the dark blue of figure 2 is always on the right side:



Row A

**Fig. 2/Fig. 4/Fig. 2/Fig. 4/Fig. 2
Make 7**

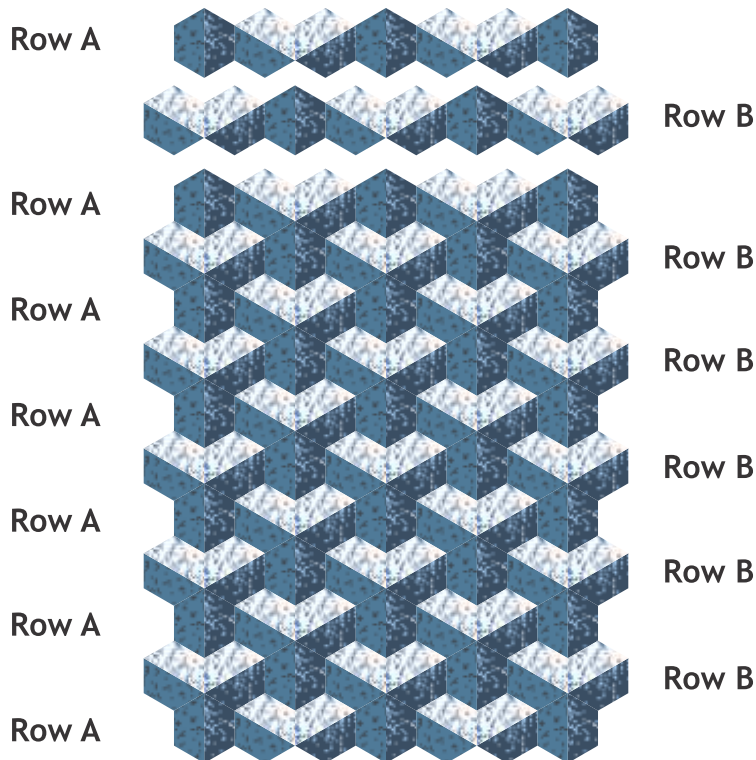


Row B

**Fig. 4/Fig. 2/Fig. 4/Fig. 2/Fig. 4
Make 6**

5) Sew all Rows A and B together by alternating them A/B/A/B/A/B/A/B/A/B/A/B/A. Fig. 5.

Fig. 5



Assembly Instructions Continued

- 6) Remove papers. See instructions on page 3.
- 7) Trim the edges of your quilt (Fig.6). See instructions on Squaring It Off on page 3.
- 8) Add borders (Fig.7). See instructions on page 3.
- 9) Layer finished top, batting and backing. Quilt as desired.
- 10) Bind and enjoy!



Fig.6



Fig.7